

ALFA TECHNICS doo

Advanced Machine Design & Manufacturing

January 2024.



SVILAJNAC - SERBIA
Free trade customs zone

Passion. Knowledge. Commitment



252 employees

- 4/5 blue color
- 1/5 white color (R&D, technology, quality, logistics, administration management)



THREE international welding engineers **IWE**



ALFA TECHNICS doo

Founded in 2010 in Kragujevac

80% of production - EXPORT

20% of production - DOMESTIC MARKET

EXPORT in 42 countries worldwide



Following Clients Needs

- ▶ *Process equipment*
- ▶ *Special manufacturing tools, welding jigs & fixtures*
- ▶ *Welded steel constructions with machining (lathe, grinding, milling)*
- ▶ *Containers for goods transportation*
- ▶ *Transport systems – conveyers (thermo-energetics, special industry, food equipment industry...)*
- ▶ *Workstations*
- ▶ *Platforms (ramps) according to clients request*
- ▶ *Airport passenger boarding systems (service stairs, rotundas)*
- ▶ *Soundproofing booths for new cars testing in automotive production plants*
- ▶ *Welded structures, combinations of INOX - steel*
- ▶ *Cranes and crane rails for different purposes and according to customers special requirements*

Securing Partners' Competitiveness

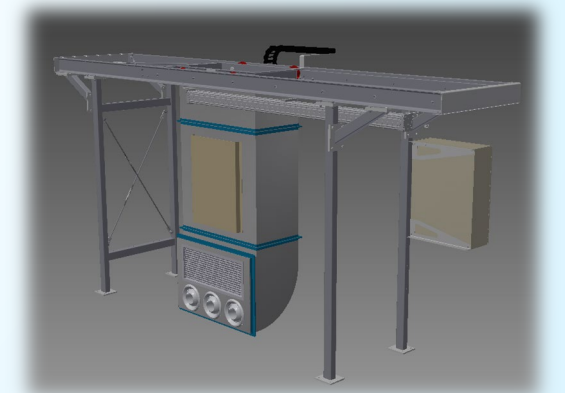
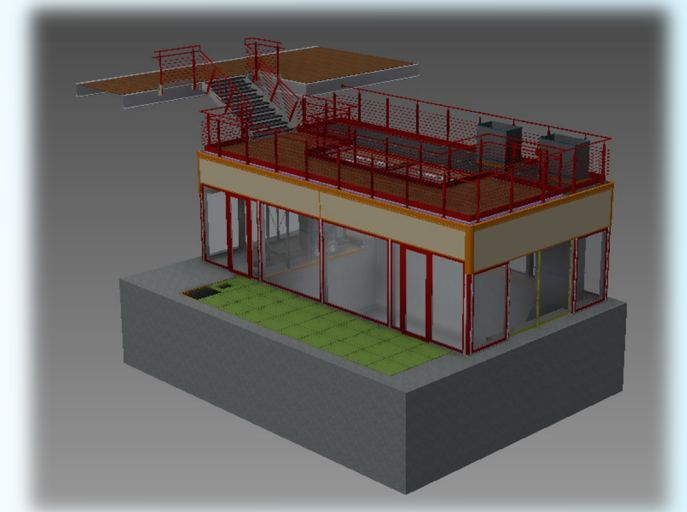
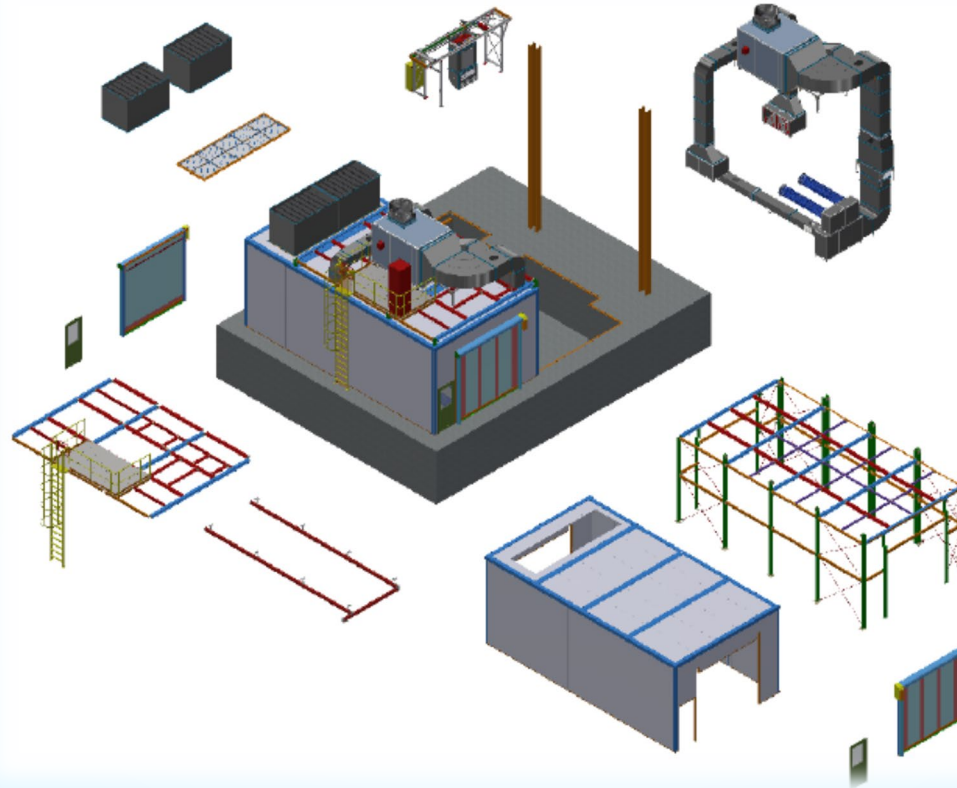
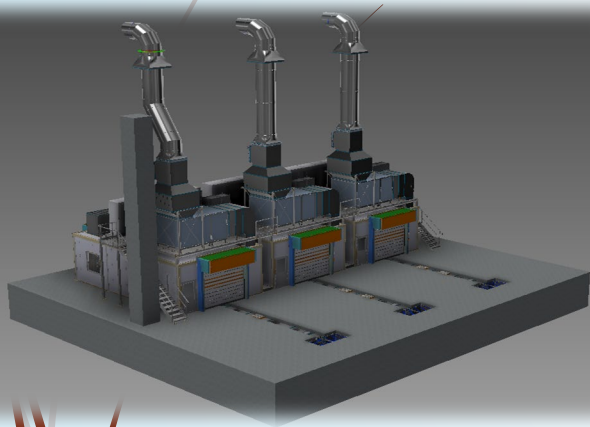
- 3D modeling
- Plasma cutting
- Laser cutting
- CNC punching
- Welding
- Cutting
- Bending
- Machining



Providing Solutions – 3d Modeling, Design & Drafting

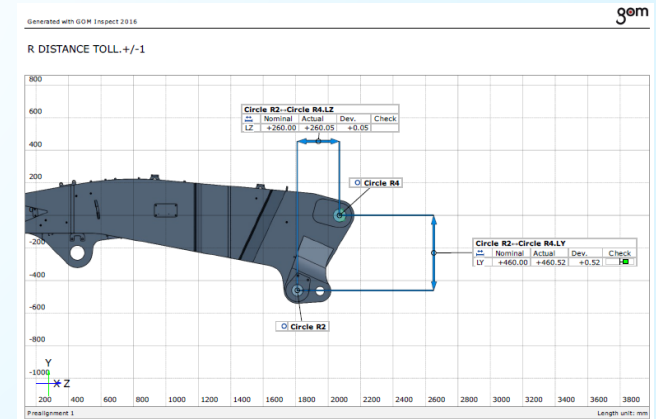
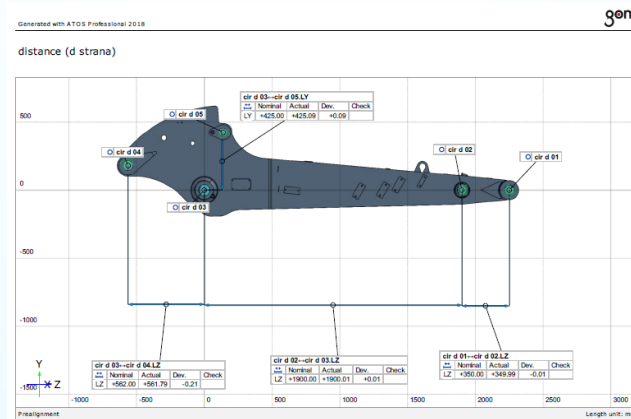
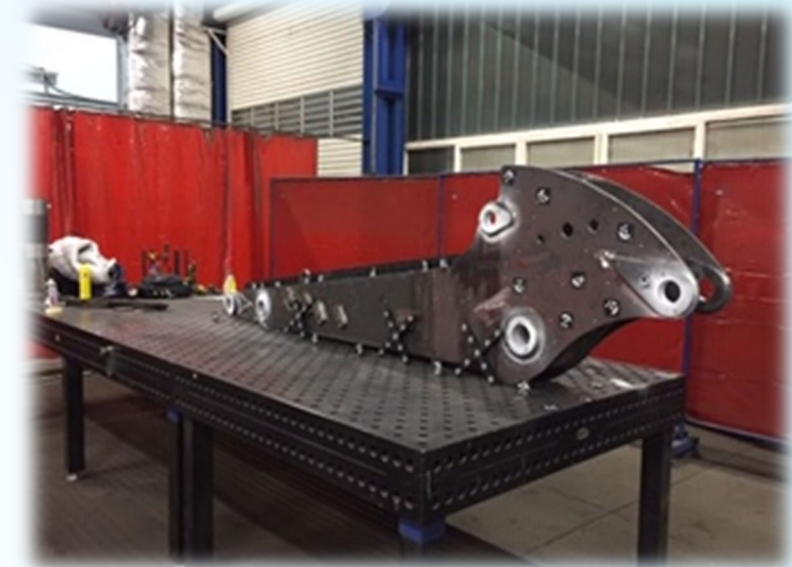
- AutoDesc Inventor Profesional
- AutoCAD LT

- 16 design engineers
- Static calculations
- Steel-work documentation



Quality – 3d Measurements

- FARO 3d tactile measuring
- GOM Optical Measurement Techniques
- Cooperation with the Faculty of Mechanical Engineering from Kragujevac



Advanced Technology

OmniMat®

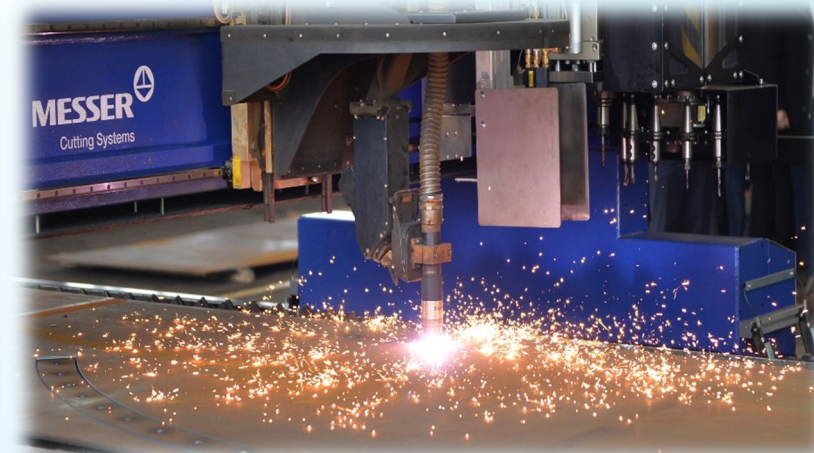
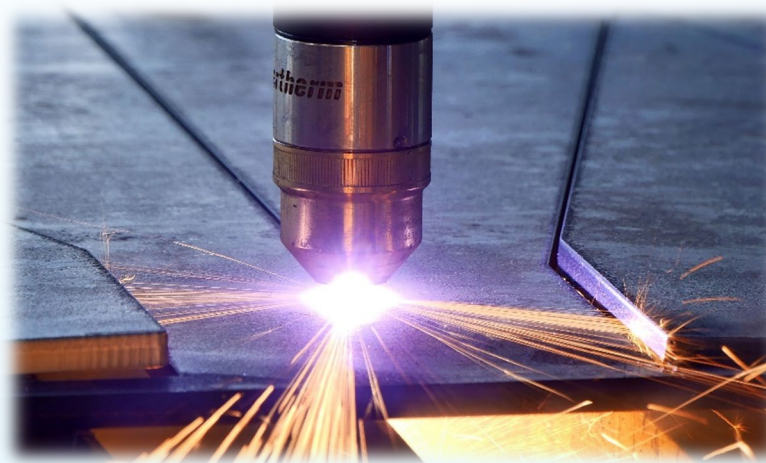
Angle cut:
-min 15°
-max 45°

Plasma cut
-up to 50mm
(inox, aluminium, steel)

CNC drilling and thread cutting:
-min $\varnothing 5$; max $\varnothing 30$; from M5 up to M30

Cutting thickness:
Plasma up to 50mm
Gas up to 130mm

Working cutting table
– 12m x 3m



LASER – Cutting System Messer Fiberblade 8025

- 6 kW max laser power
- 25 mm max laser cut thickness

MAX working table dimensions
8.000 x 2.500

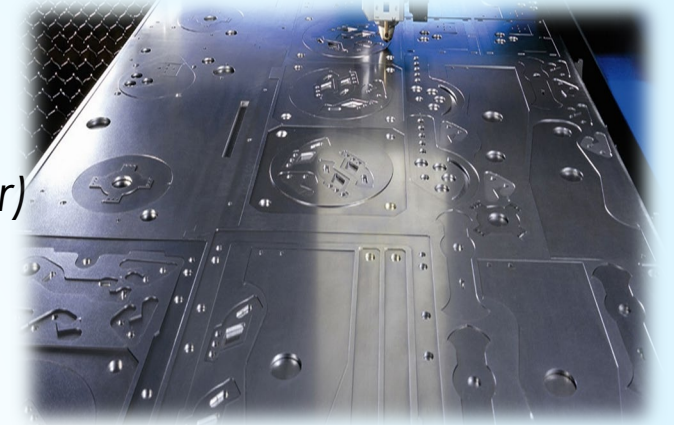
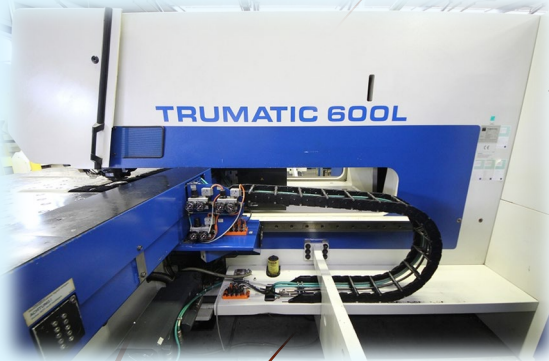


CNC punching/laser cut machine

TRUMPF TRUMATIC 600L LASER PRESS

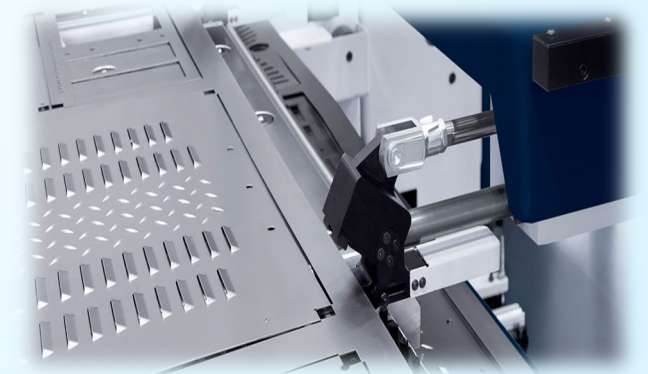
(combination punching machine and laser)

- 2,4 kW max laser power
- 8 mm max laser cut thickness
- 8 mm max CNC punching thickness



MAX working table dimensions

3.175 x 1.750 - CNC punching
3.160 x 1.700 - Laser cutting



CNC PRESSES and SCISSORS



*PSS 175/3200 Jelšingrad
Bending 3.200 mm -175 tons*



*MVCS 6200/13 Jelšingrad
Max cutting length 6.000 mm
Max material thickness 13 mm*



*PSS 400/6000 Jelšingrad
Bending 6.000mm- 400 tons*



MECOF CS 8 - two work units

Axes
X 4000
Y 1800
Z 1500

Working table 4000 x 1500



BOHRWERK TOS VARNSDORF

Axes

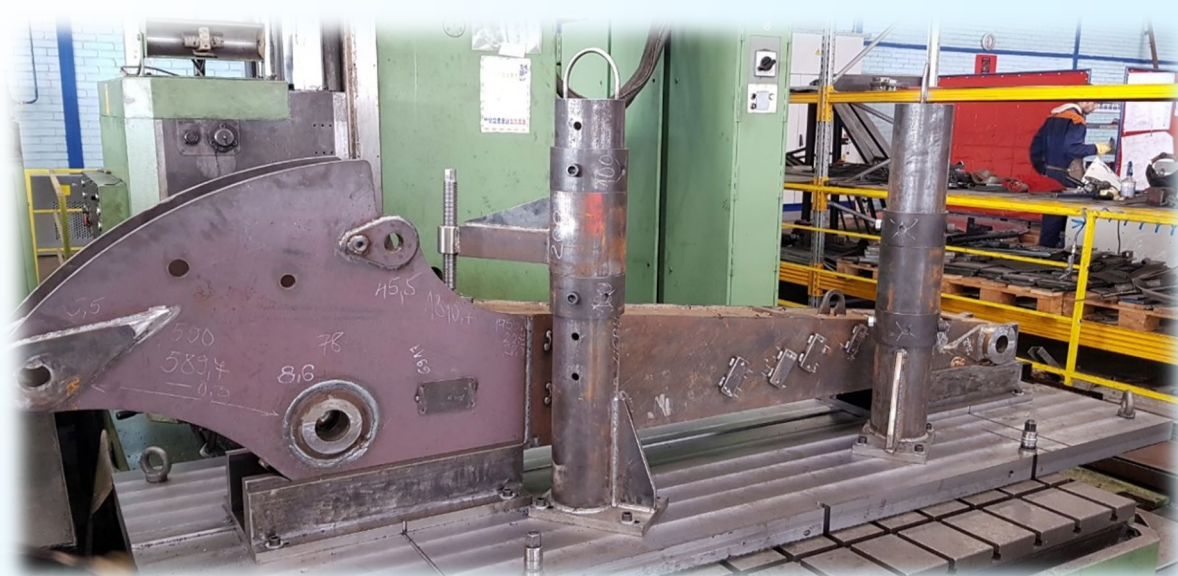
X 6000

Y 2000

Z 1700

Working rotating table

1800 x 1600



MACHINING

- Conventional lathes
- Conventional milling
- CNC lathe DOOSAN Puma 1800 SY - installation in progress
- CNC milling DOOSAN HP 5100 – installation in progress

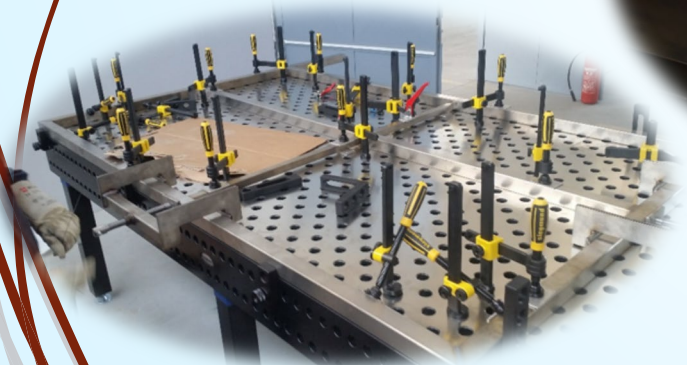


WELDING in accordance with standards

EN 15085 – 2 CL 1

EN ISO 3834-2

EN 1090-2 i EN 1090-3 EXC2



WELDING EQUIPMENT

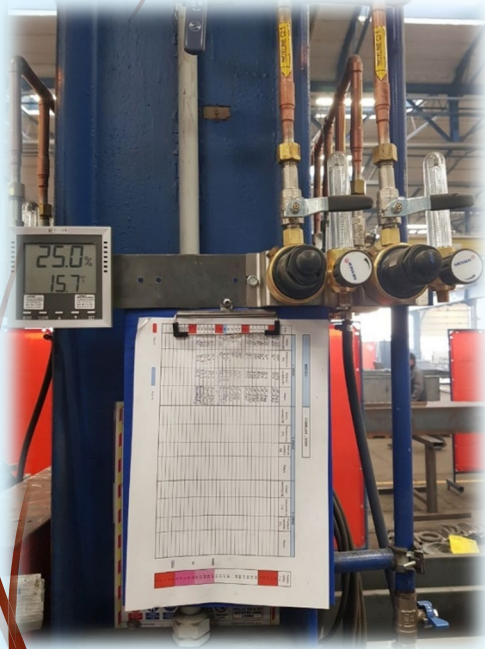
Total 87 machines (12 pcs brand new and 75 pcs 2-5 years old)

KEMPPPI

FRONIUS

CASTOLIN

Central welding gasses distribution system
by MESSER



Central welding
gasses distribution
system by MESSER

Measuring
environmental
temperature and
humidity on several
points in the workshop
Working temperature is
always between 15 and
18 °C



Welding consumables storage space (access controlled and air-conditioned)



Welders testing area (12 testing stands/boxes for 12 welders for the training and testing in the same time:



Paint shop – for wet painting

Conveyor
circular
painting
parts flow



Painting
double
chamber -
5m x 12m

Drying –
baking
chamber
(up to 60°C)
3m x 12m



Excellence. Safety. Awareness. Traceability.



ALFA TECHNICS is certified since 2014. by TÜV SÜD Industrie Service GmbH.

ISO 9001:2015;
ISO 14001:2015;
ISO 45001:2018

EN ISO 3834-2
EN 1090-1:2009+A1:2011
EN 15085-2 CL1

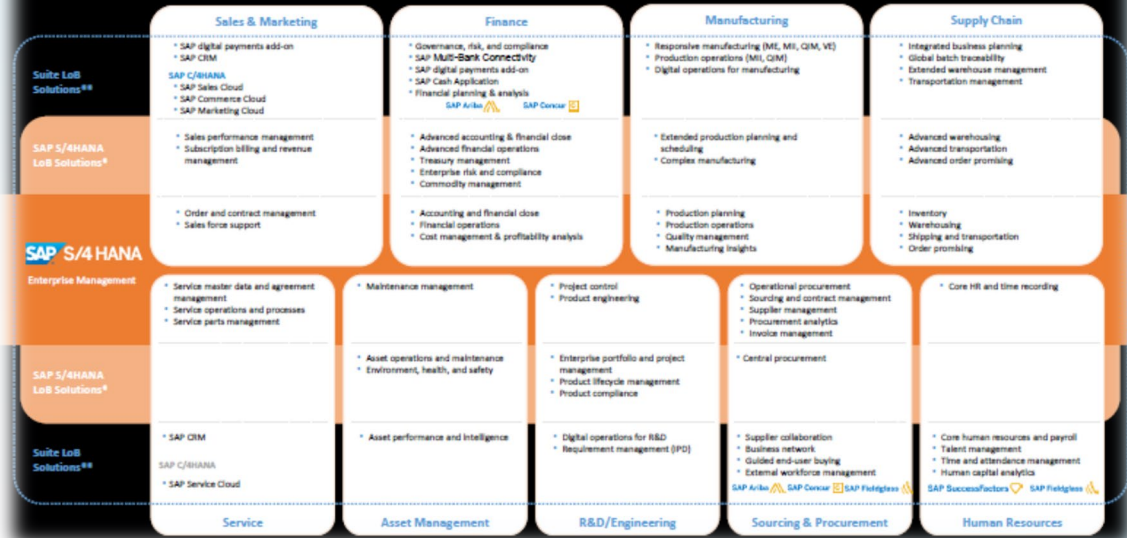


Implementation in progress



Implementing standardized, best practice solution such as SAP S/4 HANA, during 2023.

SAP S4HANA –

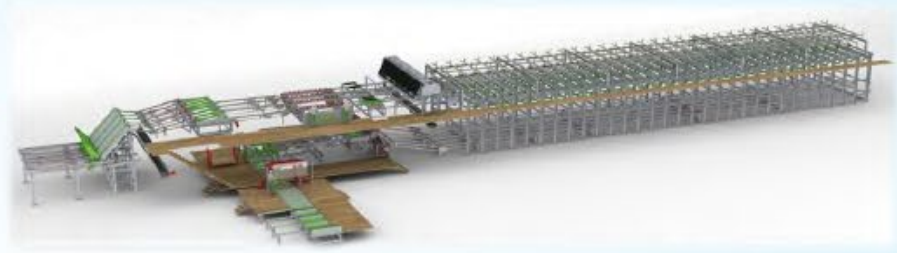


Basic Modules





Sorting machine lines for wood industry
(for Springer Maschinenfabrik GmbH
serial production)



MOBILE STONE CRUSHERS

(for Rubble Master HMH GmbH serial production)



SOUNDPROOFING BOOTHS

for the new cars testing in automotive facilities



Dürr Assembly Products GmbH



- BMW (Regensburg, Germany)
- AUDI (Ingolstadt, Germany)
- ASTON MARTIN (St. Athan, Wales)
- VOLVO (Charleston, USA)
- LAMBORGHINI (Sant'Agata Bolognese, Italy)
- VOLVO (Ghent, Belgium)
- VOLKSWAGEN (Bratislava, Slovakia)
- DAF – Leyland Trucks Ltd (United Kingdom)
- FORD (Rayong, Thailand)
- MAGNA STEYR (Graz , Austria)
- DEUTZ (Lauingen, Germany)
- ROLLS ROYCEE (Goodwood Chichester, UK)
- MERCEDES BENZ (Iracemapolis, Brazil)
- MERCEDES BENZ (Tiaret, Algeria)
- NISSAN (Sunderland, UK)
- JAGUAR LAND ROVER (Birmingham)
- NEDCAR (Born, Nederland)
- FORD (Chengalpattu, India)
- FIAT (Melfi, Italy)
- GAZ (Nizhny Novgorod, Russian Federation)
- AVTOVAZ (Togliatti , Russian Federation)
- FIAT (Kragujevac, Srbija)



PT / EC TUNNELS

in automotive facilities surface protection lines



Dürr Systems AG



Car body surface protection tanks *in automotive facilities surface protection lines*



AERPORT SYSTEMS

service stairs and rotundas

- LONDON - HEATROW (Great Britain)
- BOSTON (USA)
- TORONTO (Canada)
- BUENOS AIRES (Argentina)
- SABIHA (Turkey)
- DUSSELDORF (Germany)
- AL DUQM (Oman)
- VAN DON (Vietnam)
- KUWAIT (Kuwait)
- ORAN (Algirya)
- ACRA (Ghana)
- CAM RAHN (Vietnam)
- BRISBANNE (Australia)
- DAMMAM (Saudi Arabia)
- MINSK (Belorussia)
- VENICE (Italy)
- COCHABAMA (Uruguay)
- ROSTOV (Russia)
- HAMBURG (Germany)
- BOGOTA (Colombia)
- LA PAZ (Bolivia)
- MADRID (Spain)
- MAURICIO (Argentina)
- LYON (France)
- HELSINKI (Finland)
- ASTANA (Kazakhstan)
- CAYENNE (French Guiana)
- ISTANBUL (Turkey)
- ABU DHABI (UAE)
- RIO DE JANEIRO (Brasil)
- ROME - FIUMICINO (Italy)



ThyssenKrupp



Steel Construction of Energetic mine for Elektroprivreda Srbije (2019.) 600 tons



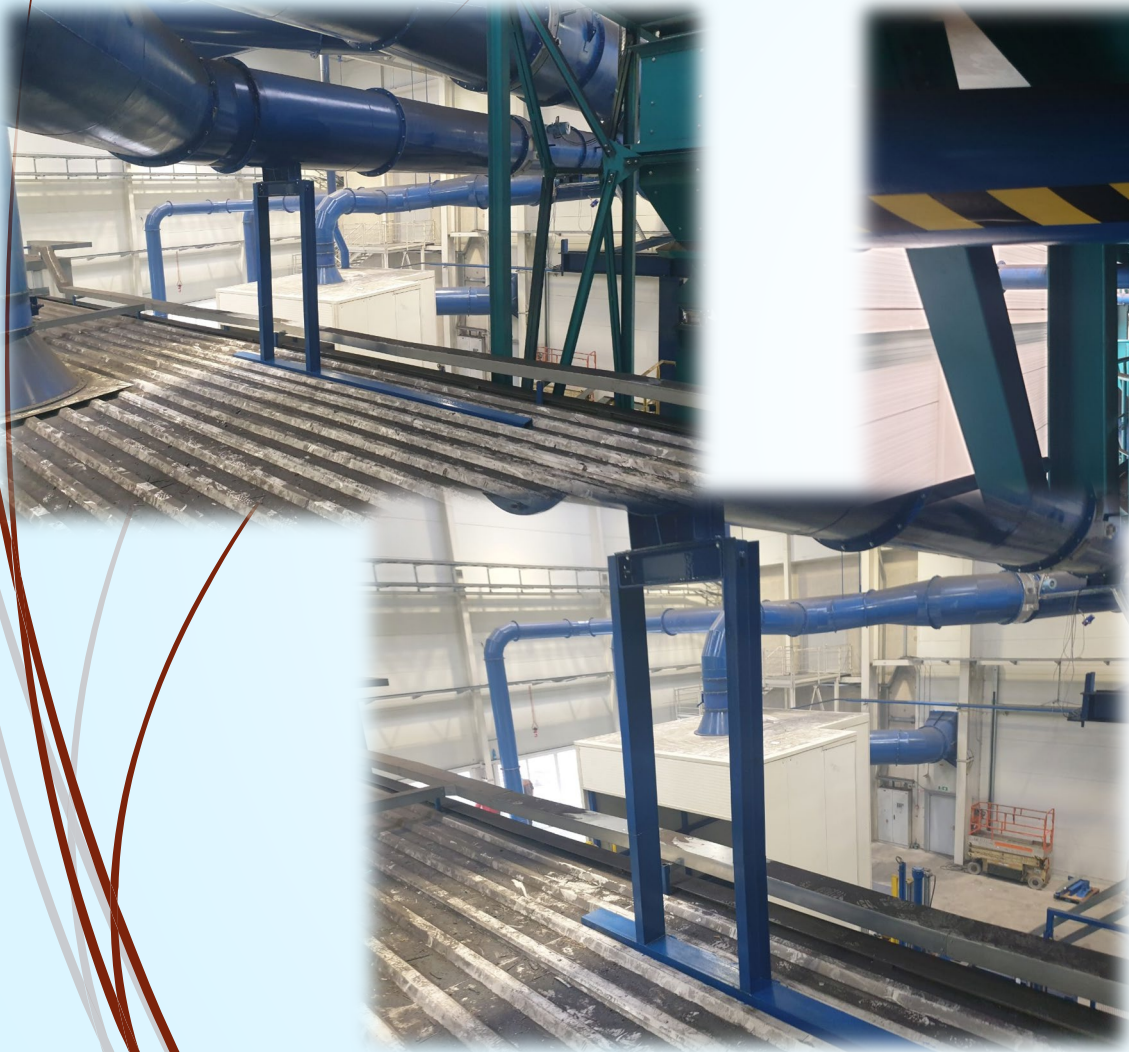
РУДАРСКИ БАСЕН
„КОЛУБАРА“



**De-dusting filter system in the production
process of precise foundry (2019.)
Slovenia 350 tons**



**De-dusting filter system in the production
process of precise foundry (2019.)
Slovenia 350 tons**



Secondary De-dusting on BOF Steel ArcelorMittal - Zenica (2019.) Bosnia And Herzegovina – 1.150 tons of reworked steel and welded steel construction



Secondary De-dusting on BOF Steel

ArcelorMittal - Zenica (2019.)

Bosnia And Herzegovina – 1.150 tons of reworked steel
and welded steel construction



Secondary De-dusting on BOF Steel

ArcelorMittal - Zenica (2019.)

Bosnia And Herzegovina – 1.150 tons of reworked steel
and welded steel construction



Secondary De-dusting on BOF Steel

ArcelorMittal - Zenica (2019.)

Bosnia And Herzegovina – 1.150 tons of reworked steel
and welded steel construction





SPECIAL TANKS

*Special tanks for complete chassis
chemical preparation and surface
protection*

*Combination of welded
Materials **INOX-STEEL**
– more than 3000 m welds length
per one tank*



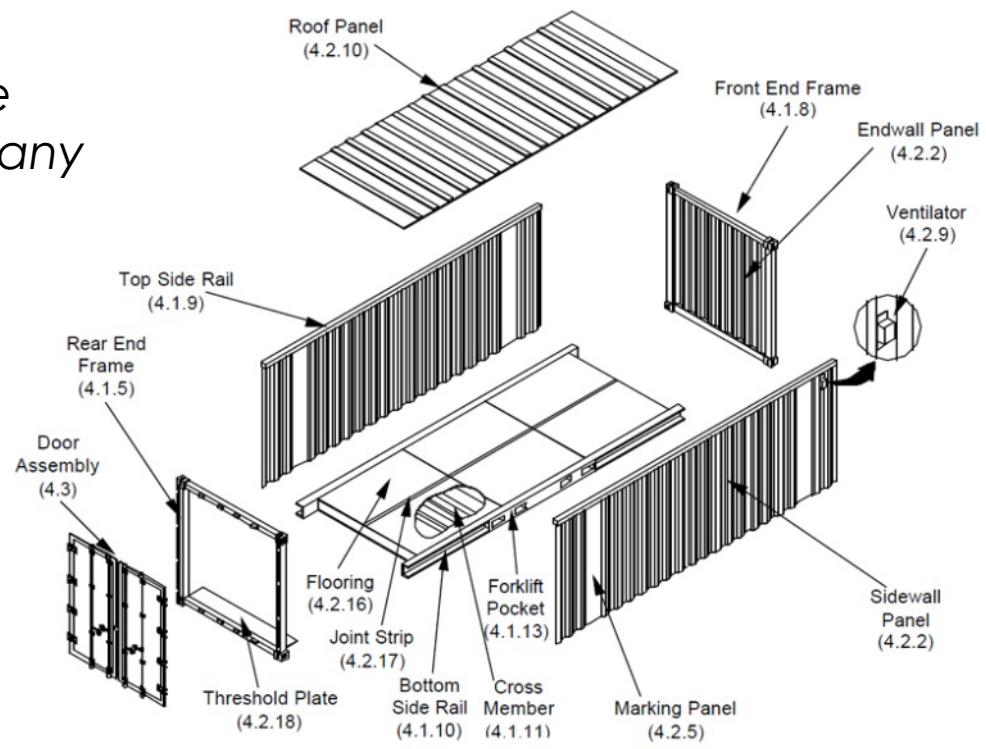
GEICO®





Containers production
 For different goods
 transportation with all it's
 elements (floor, frames side
 walls..) for Slovenian company
CONTAINER

container



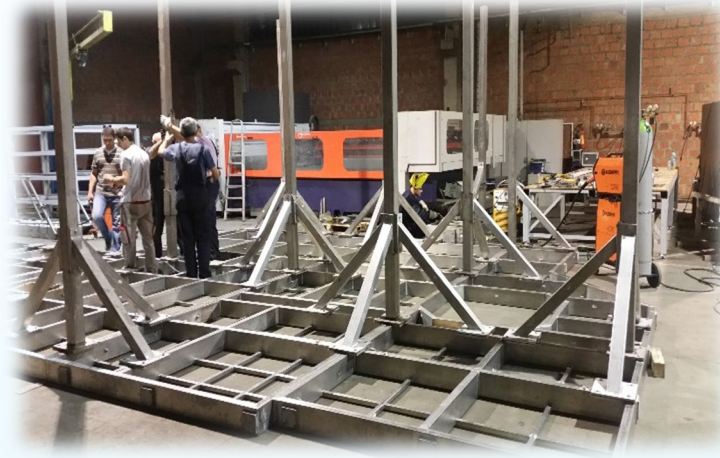
TRANSPORT SYSTEMS - CONVEYERS

Transport systems with equipment for different purposes and applications...

- Conveyers
- Screw conveyers
- Vibro conveyers
- Cranes
- Crane rails

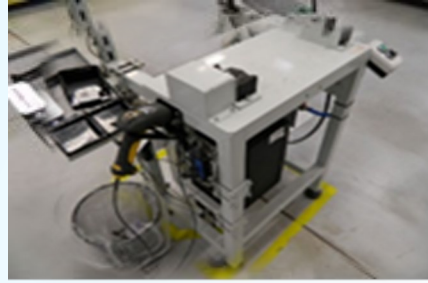


INOX PLATFORMS FOR FOOD INDUSTRY



EQUIPMENT IN ACCORDANCE WITH CUSTOMER DEMANDS

Working stations, manipulators, additional devices...



- Design
- Production
- Assembling at the final customer place



 **JOHNSON
ELECTRIC**



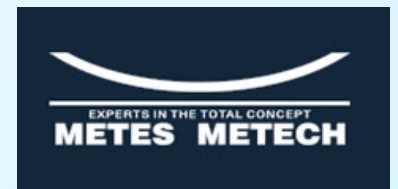
GRUNDFOS 

OTHER REFERENCES



Protective fences on the highway bridges, protective walkway fences on the highway bridges, protective nets fences on the highway knots





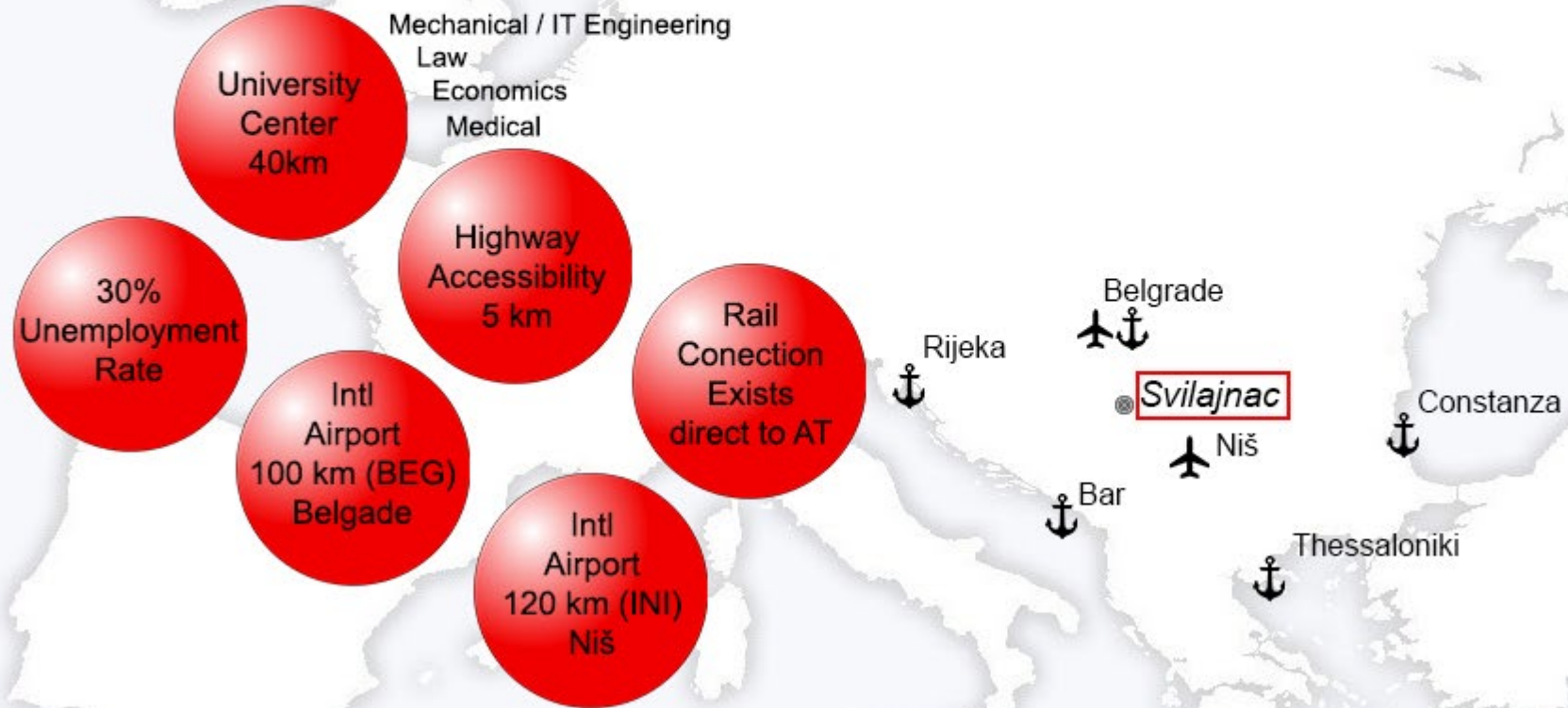
Serbia

Best-Cost Country in the middle of Europe



Svilajnac

Providing infrastructure and Employees



PRESENT SITUATION
(COVERED AREAS)

Material Storage (incoming material storage, expedition area – 3400 m²)

Incoming material storage, expedition area – 1.700 m²

Primary parts preparation (cutting, bending, machining) – 3.300 m²

Paint shop – 800 m²

Assembling – 600 m²

Welding training space – 100 m²

Compressed air plant – 100 m²

Manual sand blasting – 250 m²

Administration building – 2.640 m²

Welding shop – 6480 m²

TOTAL COVERED AREA 17.670 m²

NEW WELDING WORKSHOP

New Welding workshop with offices – 7.920 m²
(6.480 m² only welding workshop)



New Welding workshop with offices – 7.920 m²
(6.480 m² only welding workshop)



New Welding workshop with offices and welding training center – 7.920 m²

- 6.480 m² only welding workshop
- three-nave hall with four 12,5t cranes in each nave (total twelve 12,5t cranes)
- In each nave cranes can work separately and all four synchronized (50t load can be lifted)





ALFA TECHNICS future spreading



FREE TRADE-CUSTOMS ZONE



COVERED SPACE - 17.150 m²



Complex 46.000 m²



ALFA TECHNICS doo
Kneza Miloša 61
35 210 Svilajnac

Tel: +381 35 8150 700
Fax: +381 35 81 50 750
office@alfatechnics.net
www.alfatechnics.net



FREE TRADE-CUSTOMS ZONE

THANK YOU FOR YOUR KIND ATTENTION



ALFA TECHNICS doo
Kneza Miloša 61
35 210 Svilajnac

Tel: +381 35 8150 700
Fax: +381 35 81 50 750
office@alfatechnics.net
www.alfatechnics.net